

The background is a detailed, aged map with a grid of latitude and longitude lines. A compass rose is visible at the bottom, showing cardinal directions like 'NW' and 'NE'. A red star is marked on the left side of the map. The overall tone is sepia and historical.

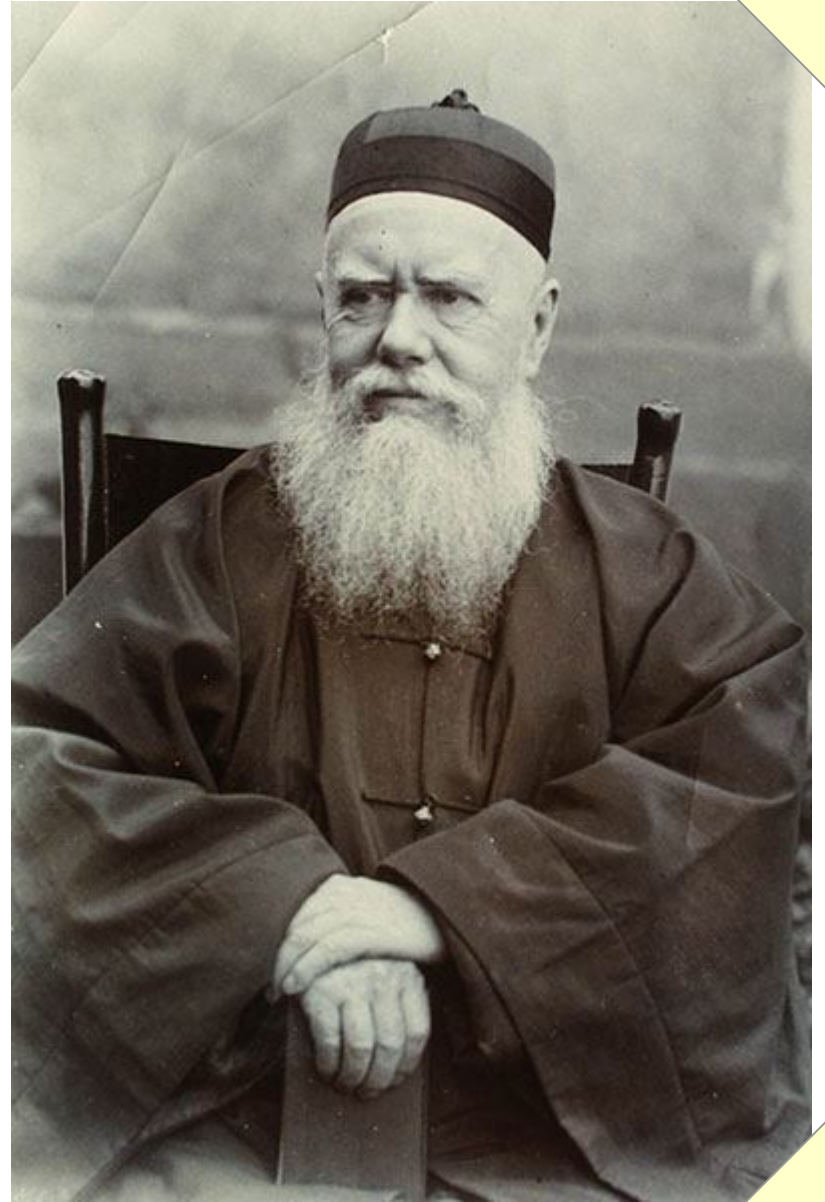
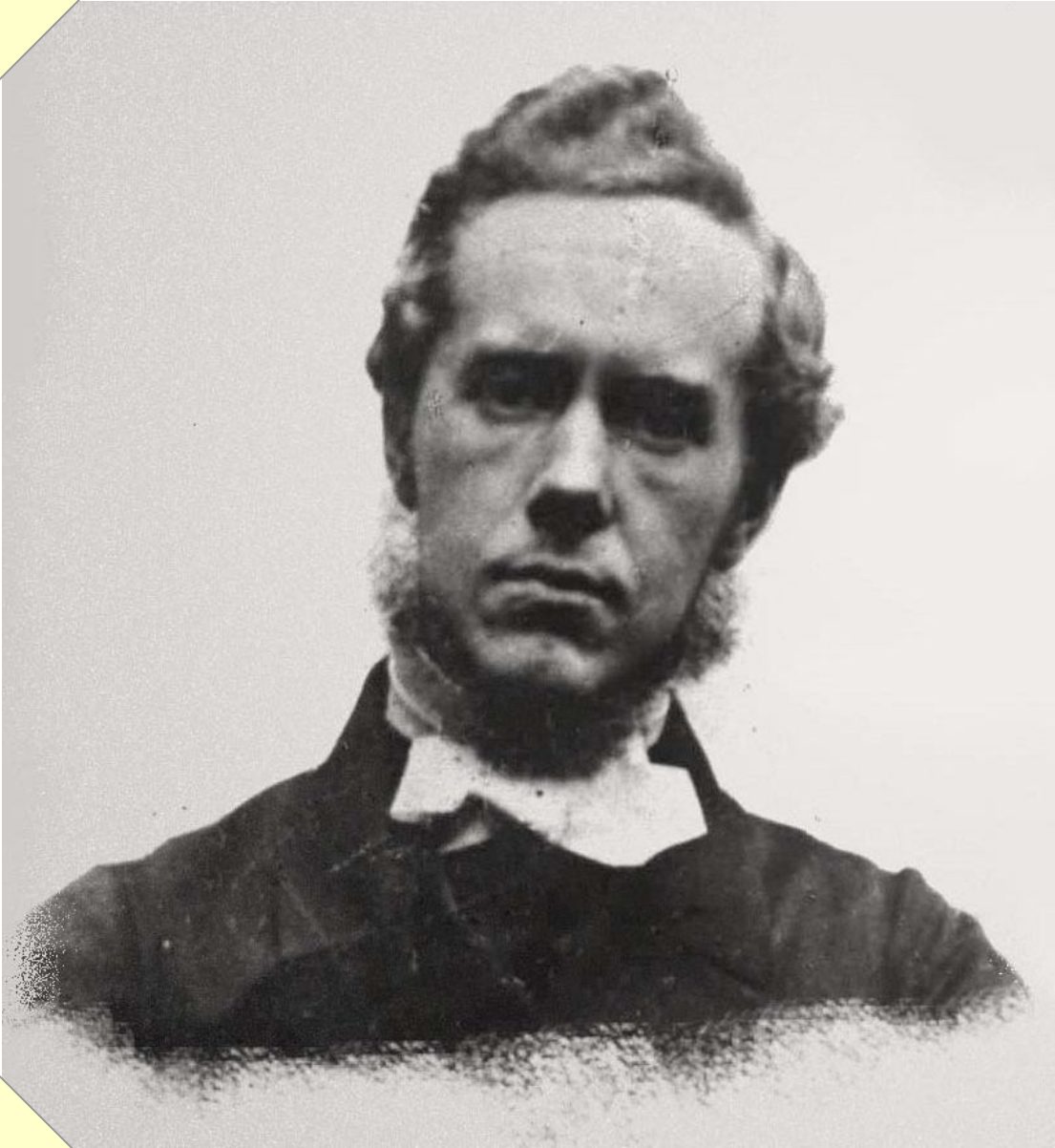
FACES *and* PLACES

from the Vanuatu Expedition

The background is an antique, aged map with a grid of latitude and longitude lines. A compass rose is visible at the bottom, showing cardinal directions like 'NW' and 'NE'. A red 'X' mark is placed on the map in the upper left quadrant. The map has a yellowish-brown, weathered appearance with some stains and a circular stamp at the top center.

Hudson Taylor

(1832-1905)



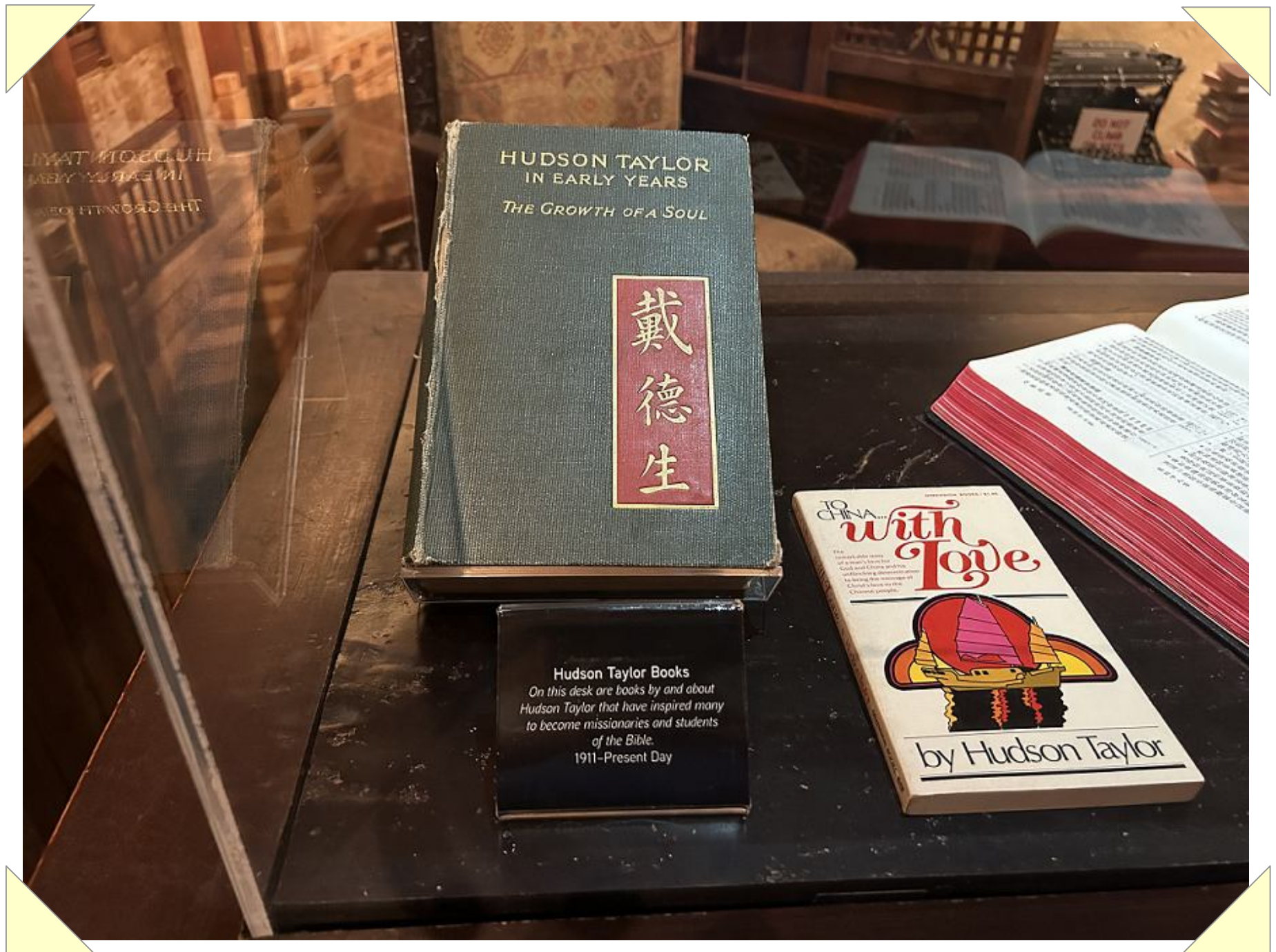
Portraits of Hudson Taylor



Hudson and Maria Taylor



A Chair from Hudson Taylor's House



Books that Hudson Taylor Wrote

China Inland Mission.



Rev. J. Hudson Taylor & Wife, with Group of Christian

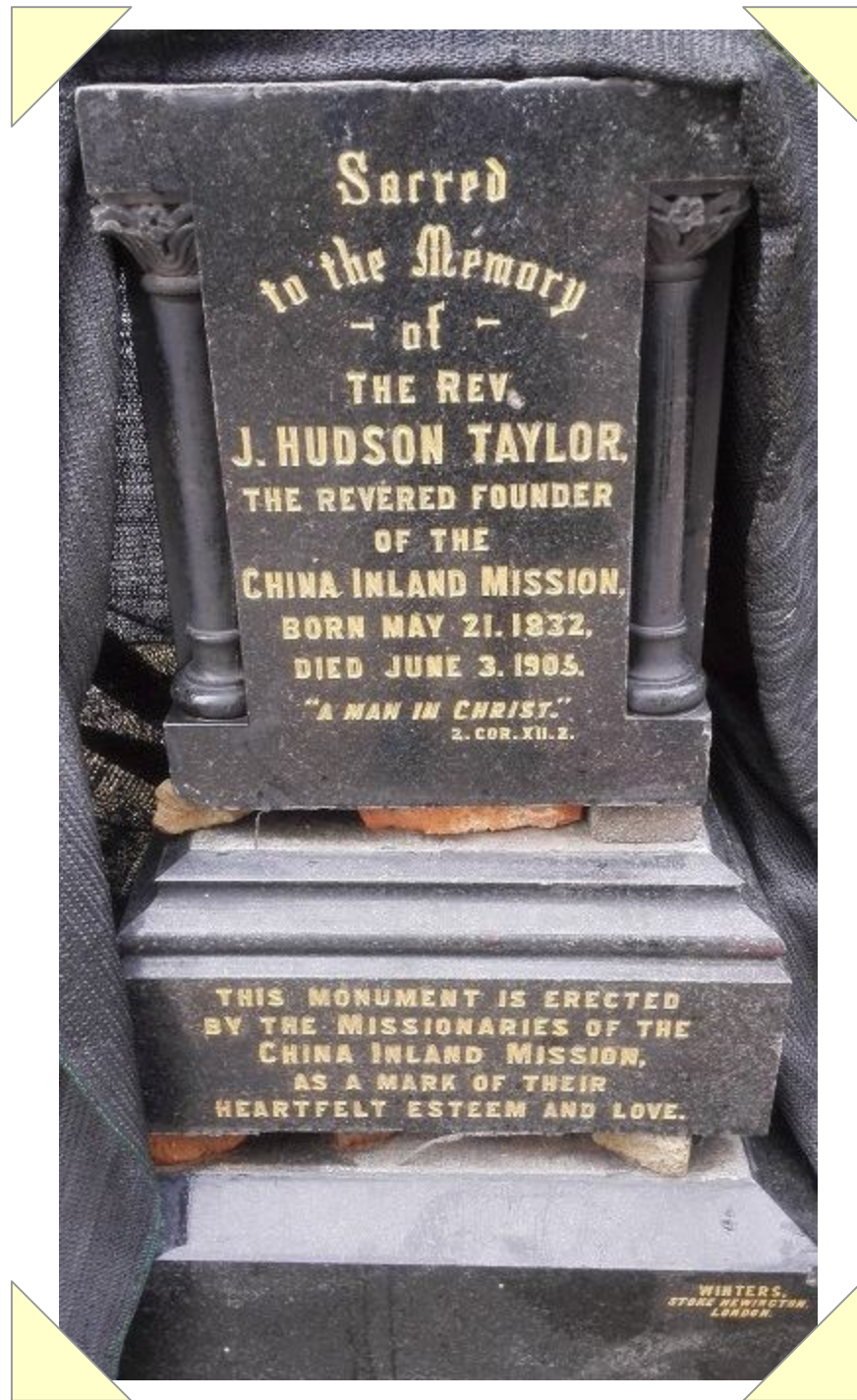
Hudson Taylor with Chinese Christians



China Inland Mission Team



Hudson Taylor's House in Yangzhou



Hudson Taylor's Grave

