



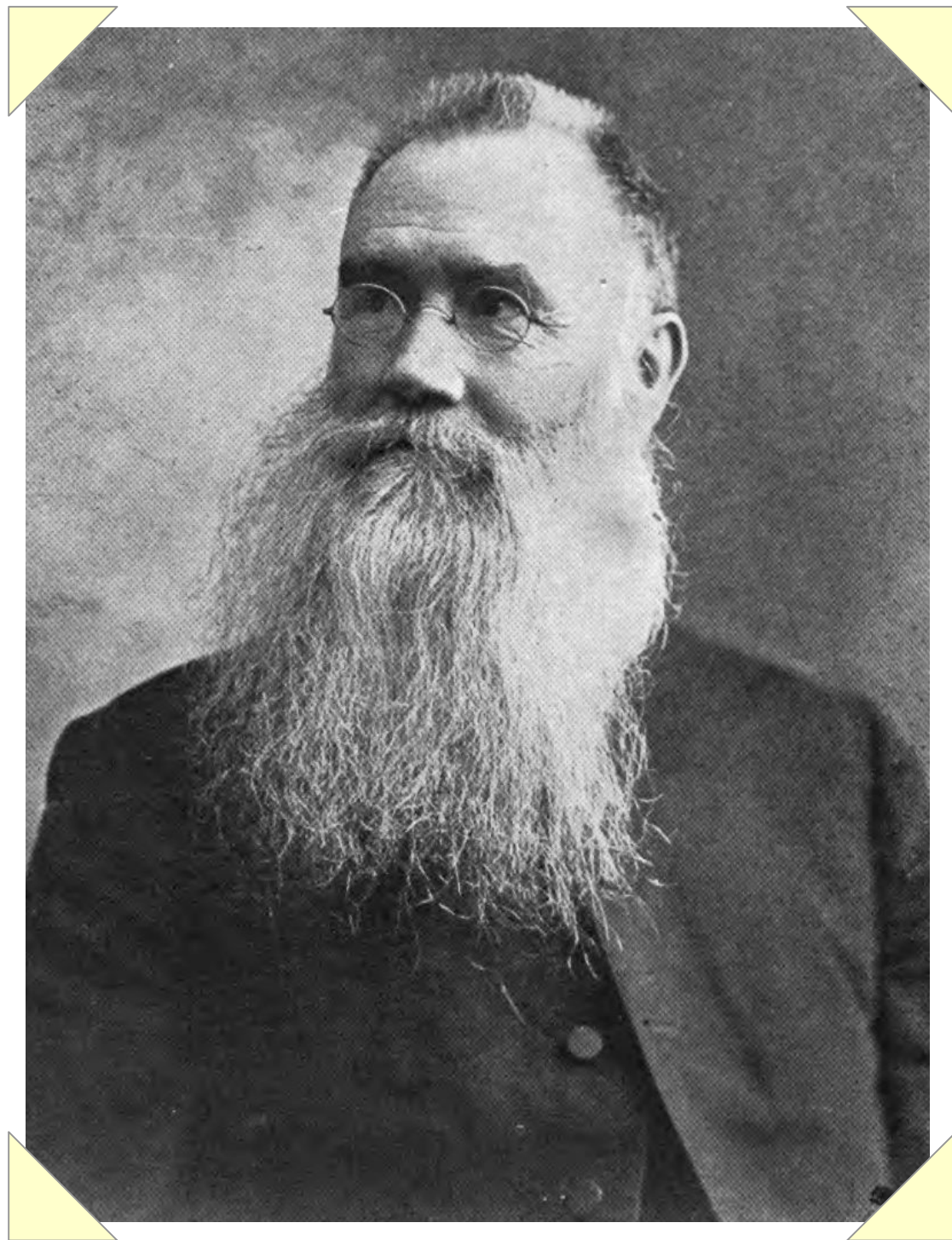
FACES
and
PLACES

from the China Expedition

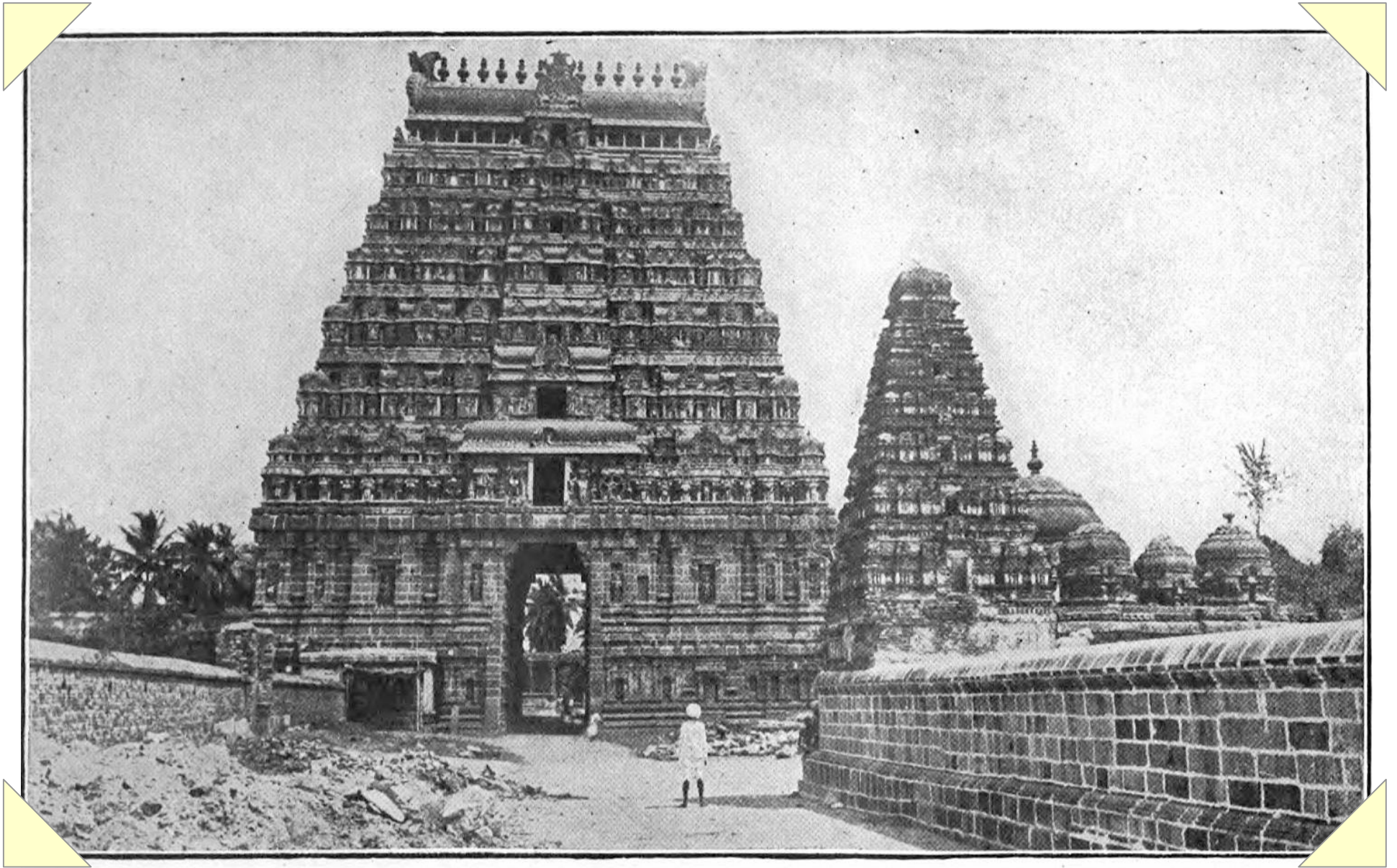
The background is an antique map with a grid of latitude and longitude lines. A compass rose is visible at the bottom, showing cardinal directions like 'NW' and 'NE'. A red 'X' mark is on the left side, and a circular diagram is at the top. The map is aged and has some stains.

Jacob Chamberlain

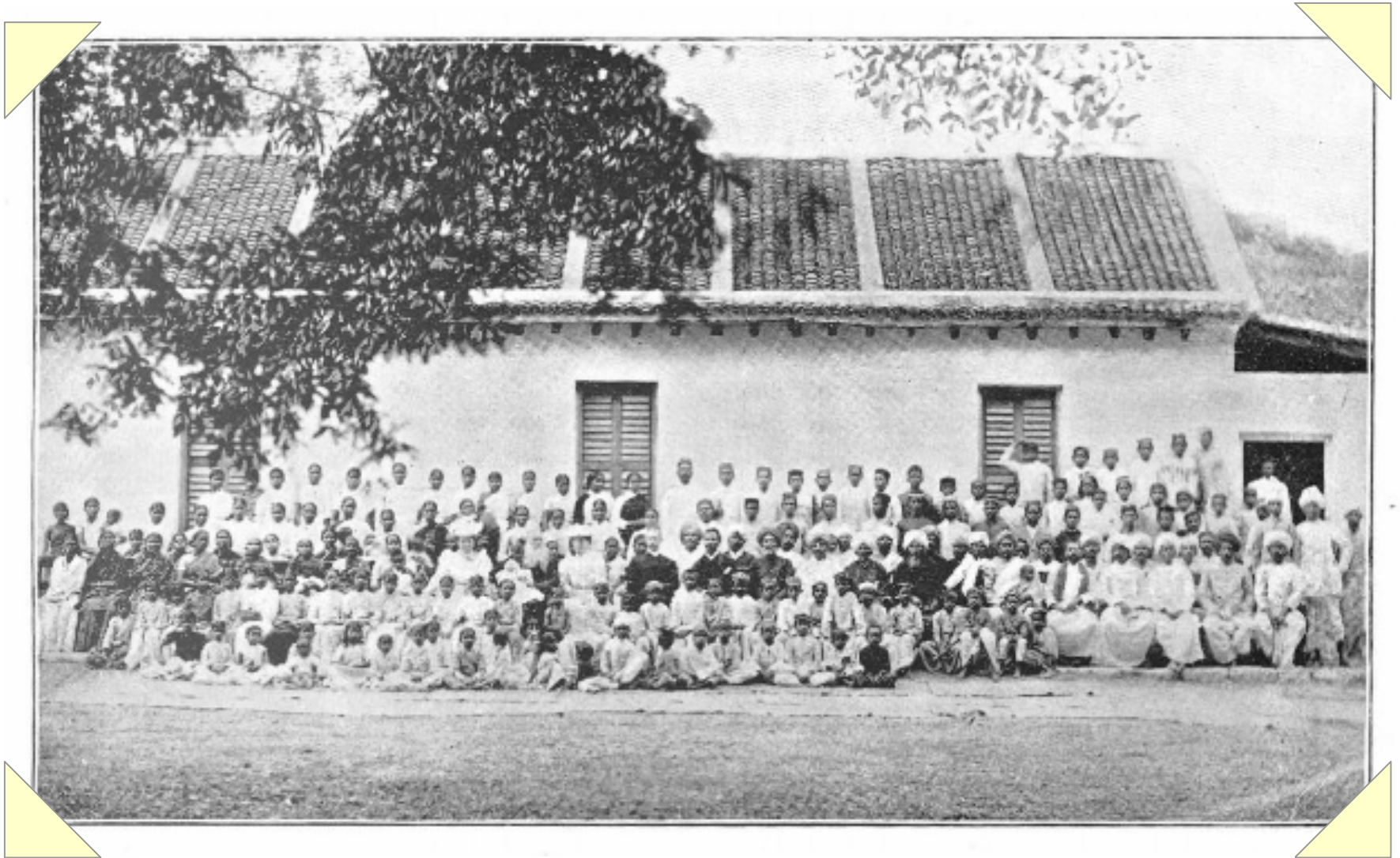
(1835-1908)



Portrait of Jacob Chamberlain



A Hindu Temple Jacob Chamberlain wrote about



Madanappale Church Bidding Farewell to the Chamberlains



The Chamberlains and the Scudders, 1908

IN THE TIGER JUNGLE

And Other Stories of
Missionary Work Among
the Telugus of India.

BY THE REV. JACOB CHAMBERLAIN, M.D., D.D.



With an Introduction
by Dr. Francis E. Clark, D.D.

1896

Jacob Chamberlain's Book

