



**FACES**  
*and*  
**PLACES**

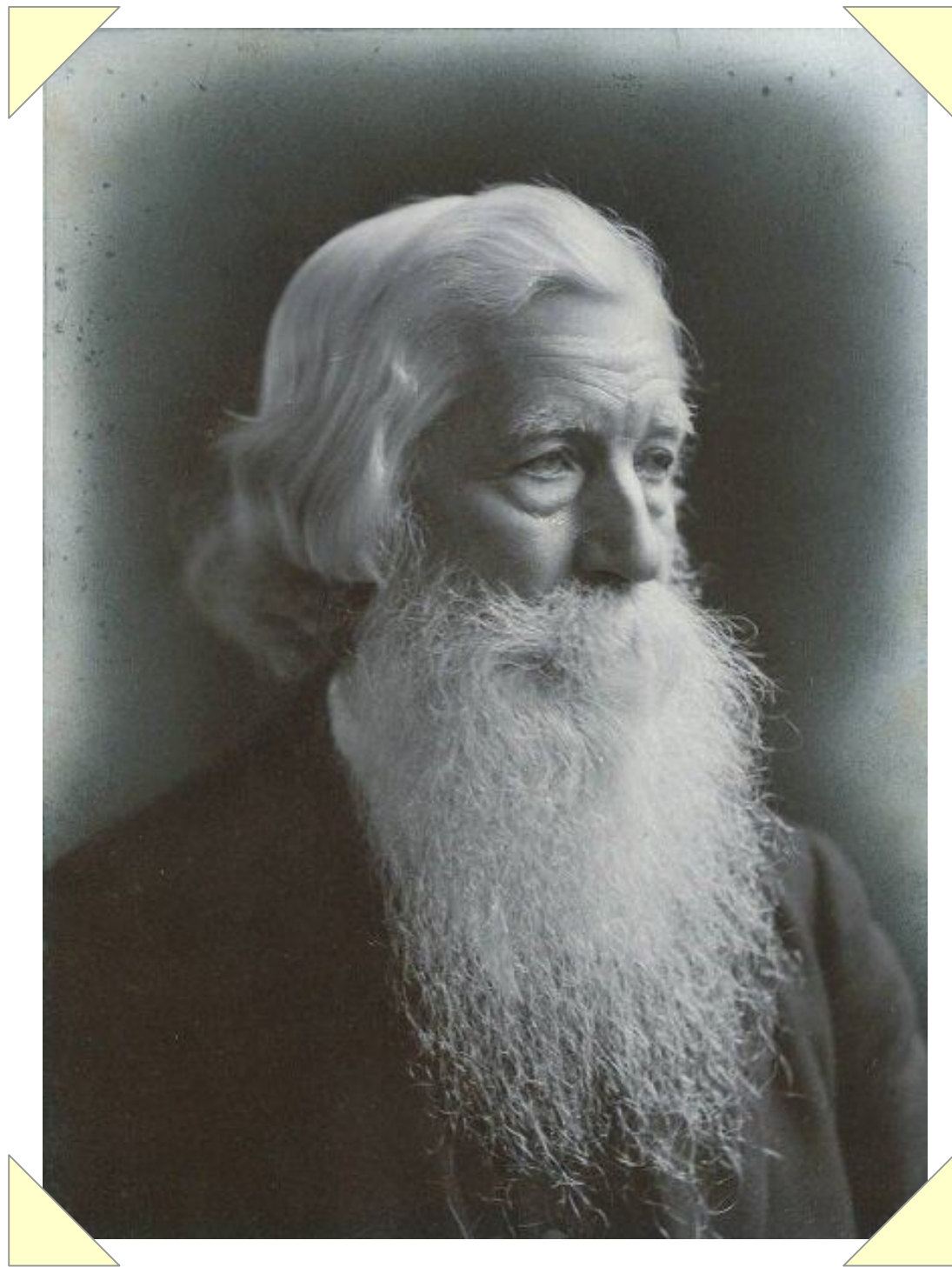
from the China Expedition



The background is an antique map with a grid of latitude and longitude lines. A compass rose is visible at the bottom, showing cardinal directions like 'NW' and 'NE'. A red 'X' mark is on the left side, and a circular diagram is at the top. The map has a yellowish, aged appearance with some stains.

# John Paton

(1824-1907)



Portrait of John Paton





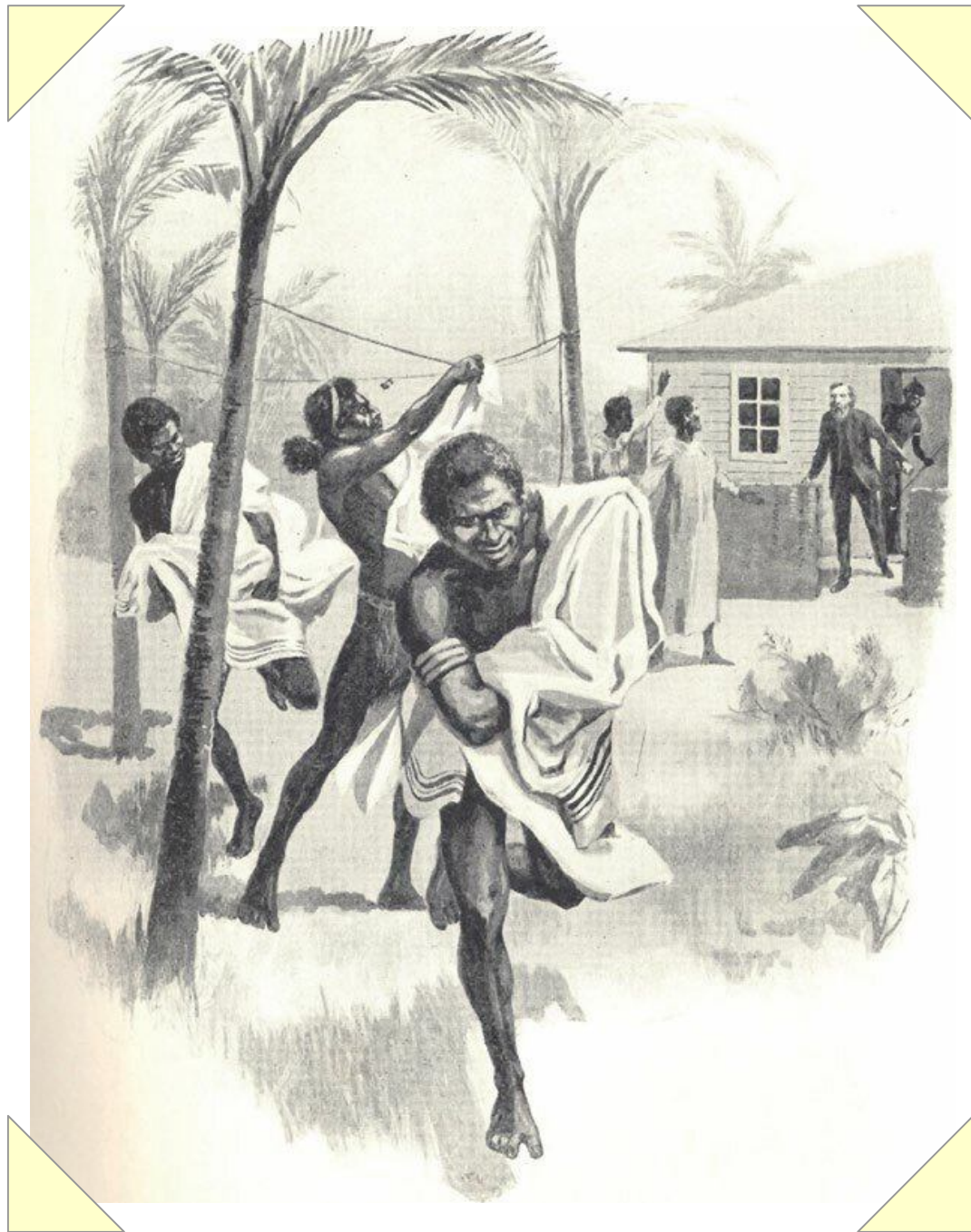
John Paton's Childhood Home



*John Paton with Family Members*

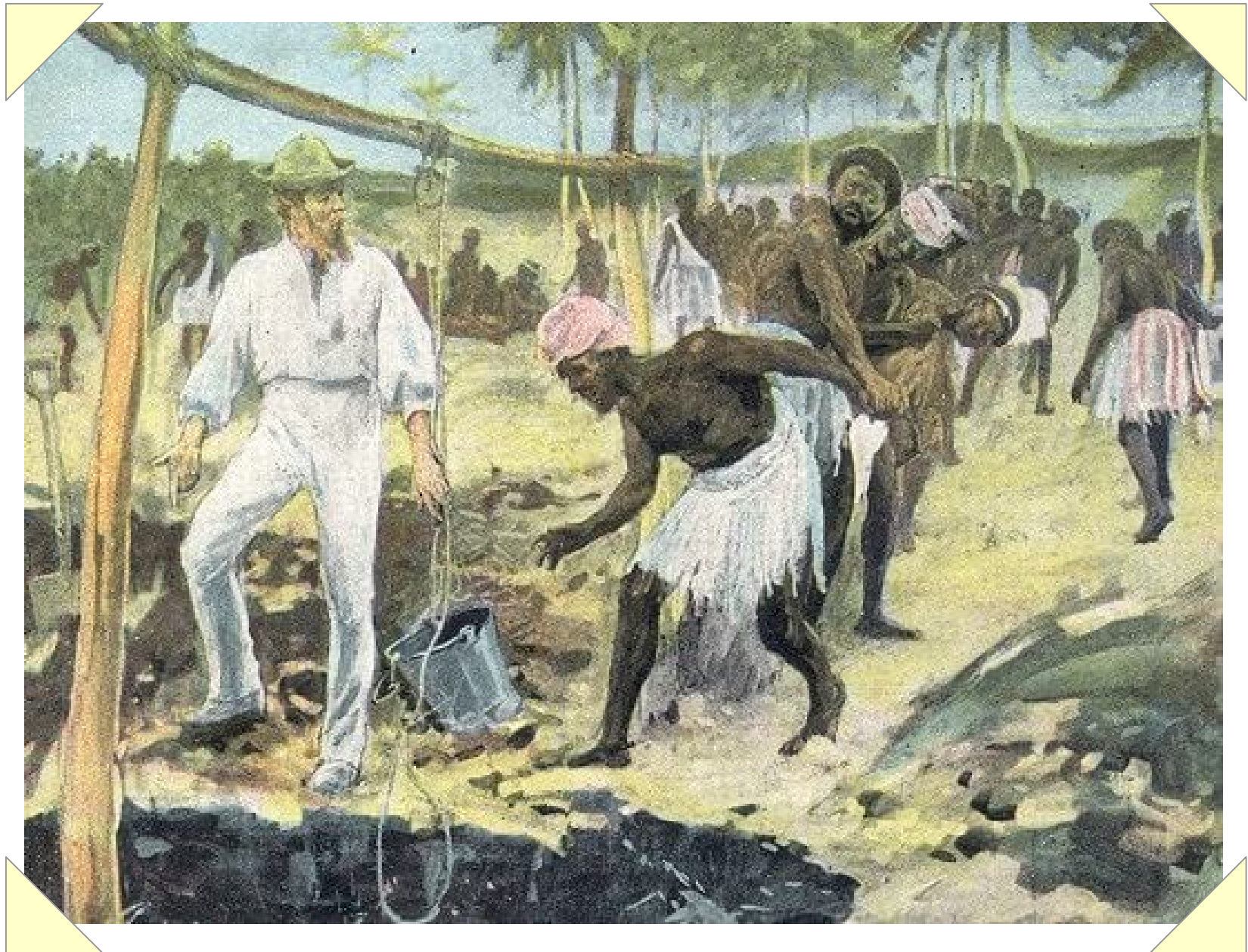


*John G. Paton Memorial Hospital - Vanuatu*



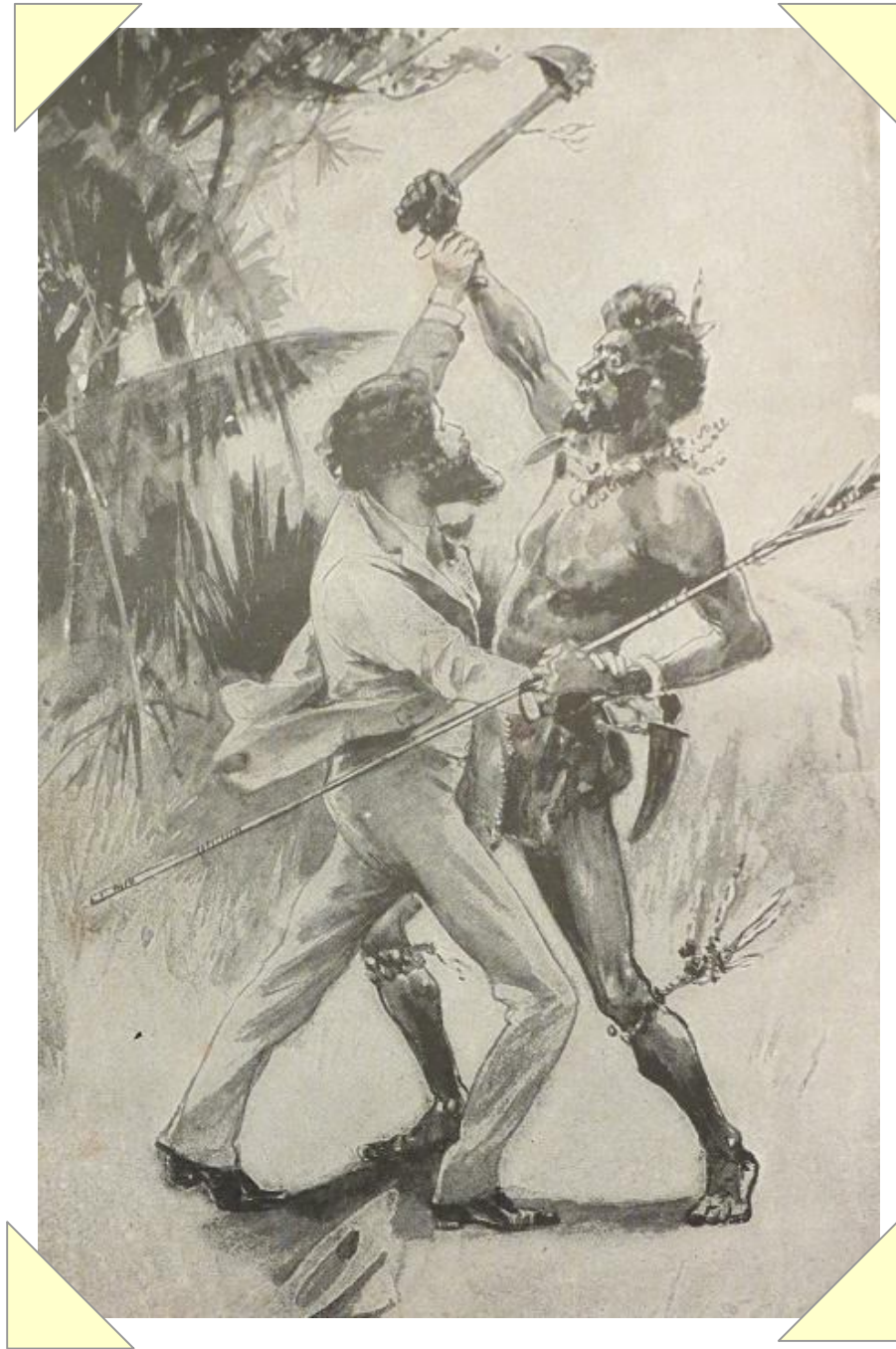
Drawing of Natives Stealing John Paton's Clothes and Sheets



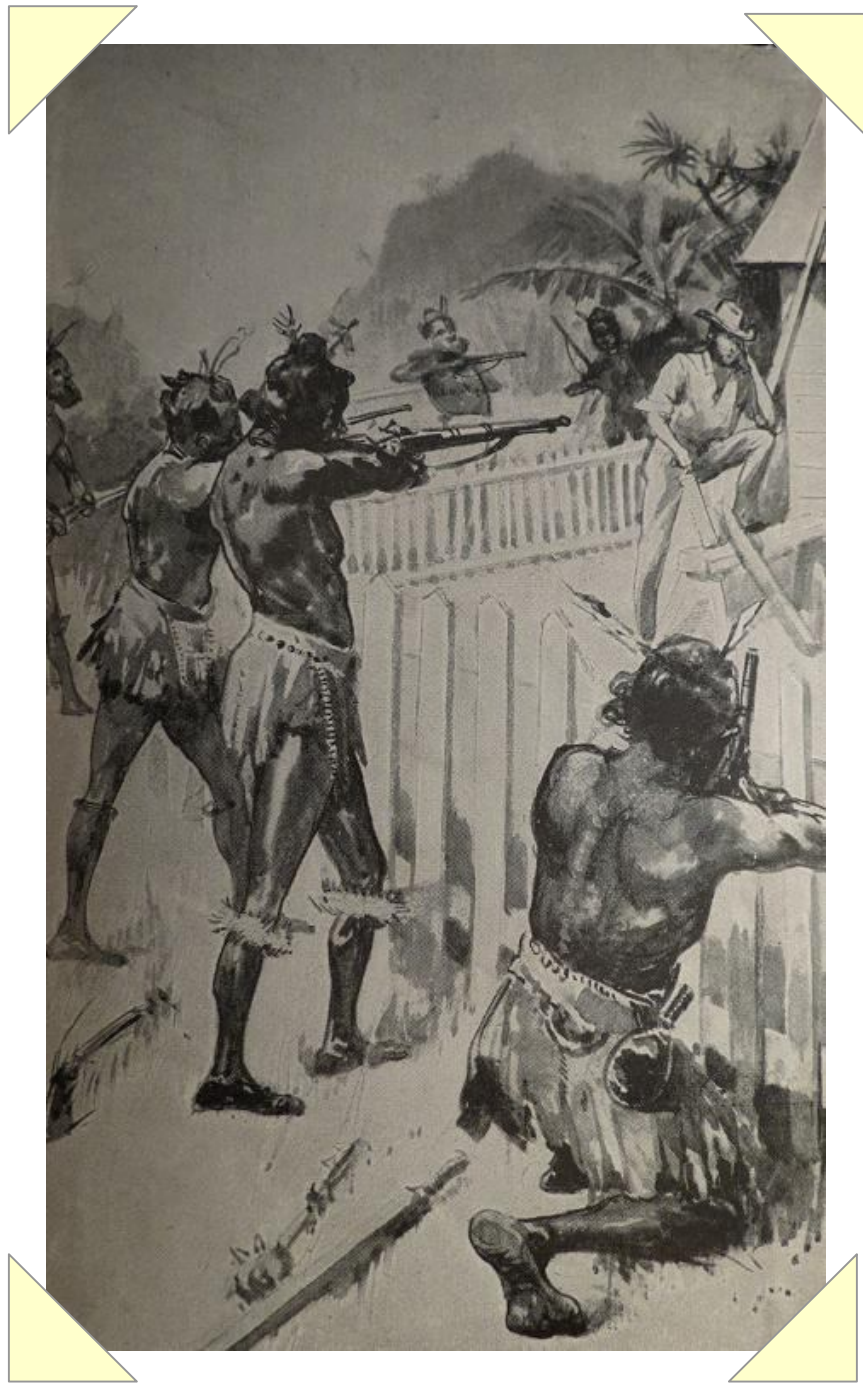


Painting of John Paton Finding Water from His Well





Drawing of John Paton Being Attacked



Drawing of John Paton Being Surrounded by Natives with Guns



John Paton's Collection Box – A 19<sup>th</sup> Century Preserved Coconut from the South Pacific





John Paton's Gravestone



