



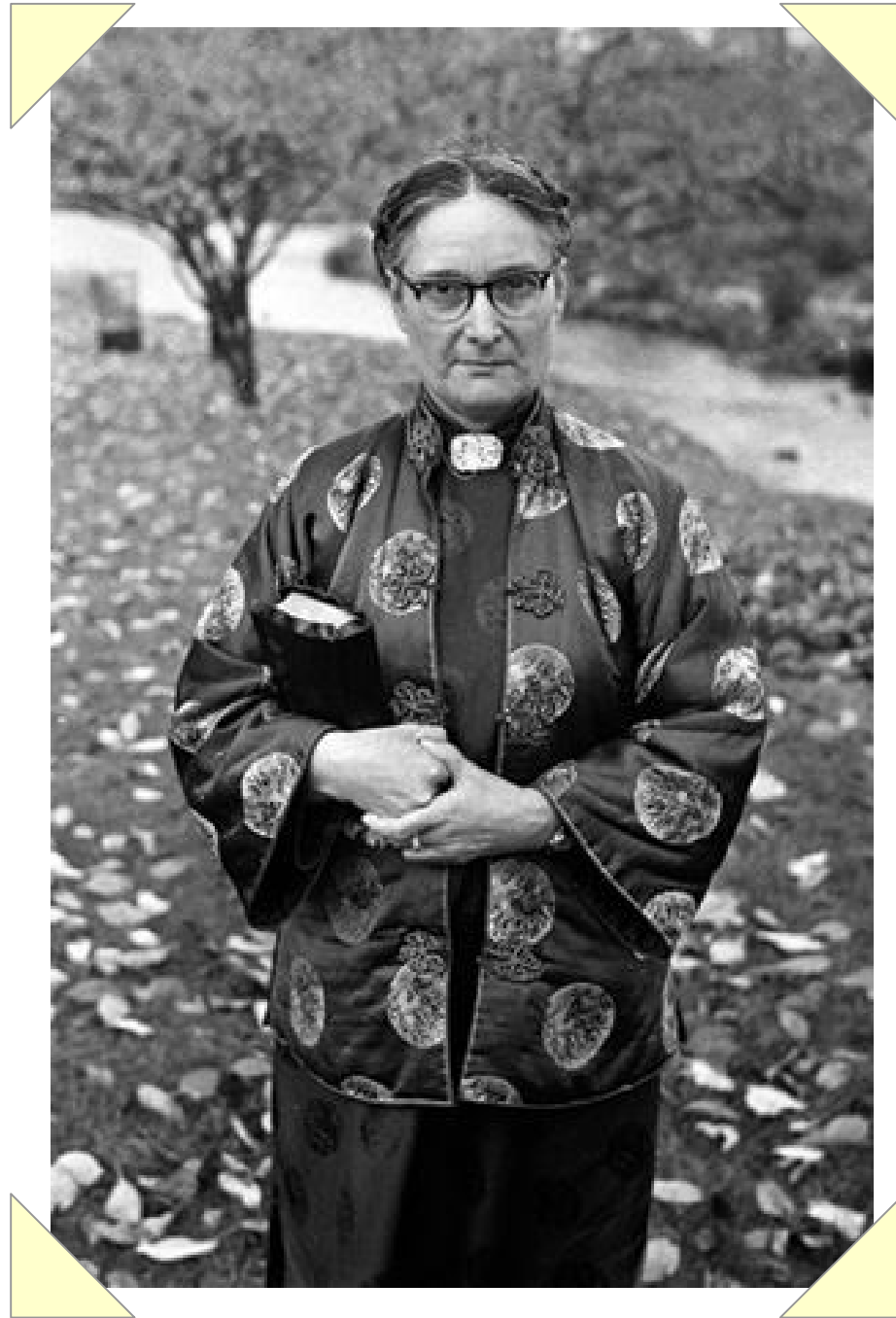
**FACES**  
*and*  
**PLACES**

from the China Expedition

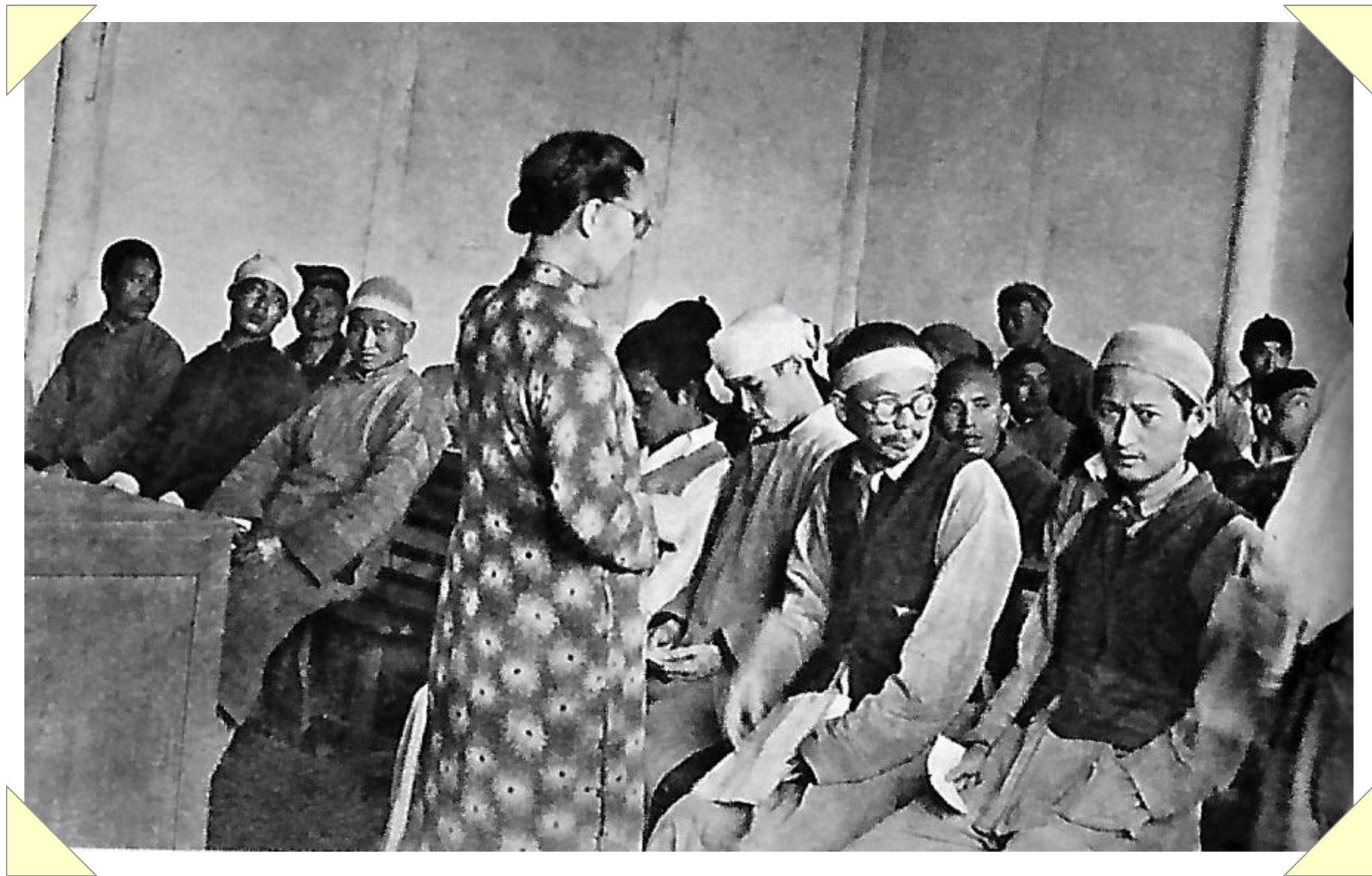
The background is an antique, weathered map with a grid of latitude and longitude lines. A compass rose is visible at the bottom, showing cardinal directions like 'NW' and 'NE'. A red 'X' mark is drawn on the map in the upper left quadrant. The map has a yellowish-brown, aged appearance with some stains and wear.

# Gladys Aylward

(1902-1970)



Portrait of Gladys Aylward



Gladys Aylward Teaching at the Inn of Sixth Happiness



Some Chinese People at the Inn of Sixth Happiness



Gladys Aylward with Some Children in Yangchen, China, 1936



Gladys Aylward with Some of Her Children before Crossing the Mountains to Sian



Gladys Aylward with a Child





Lian Ai, One of the Orphans Gladys Aylward Rescued, Sent Gladys Her Wedding Photo



285

312

150

135

120

90

NW

NE