



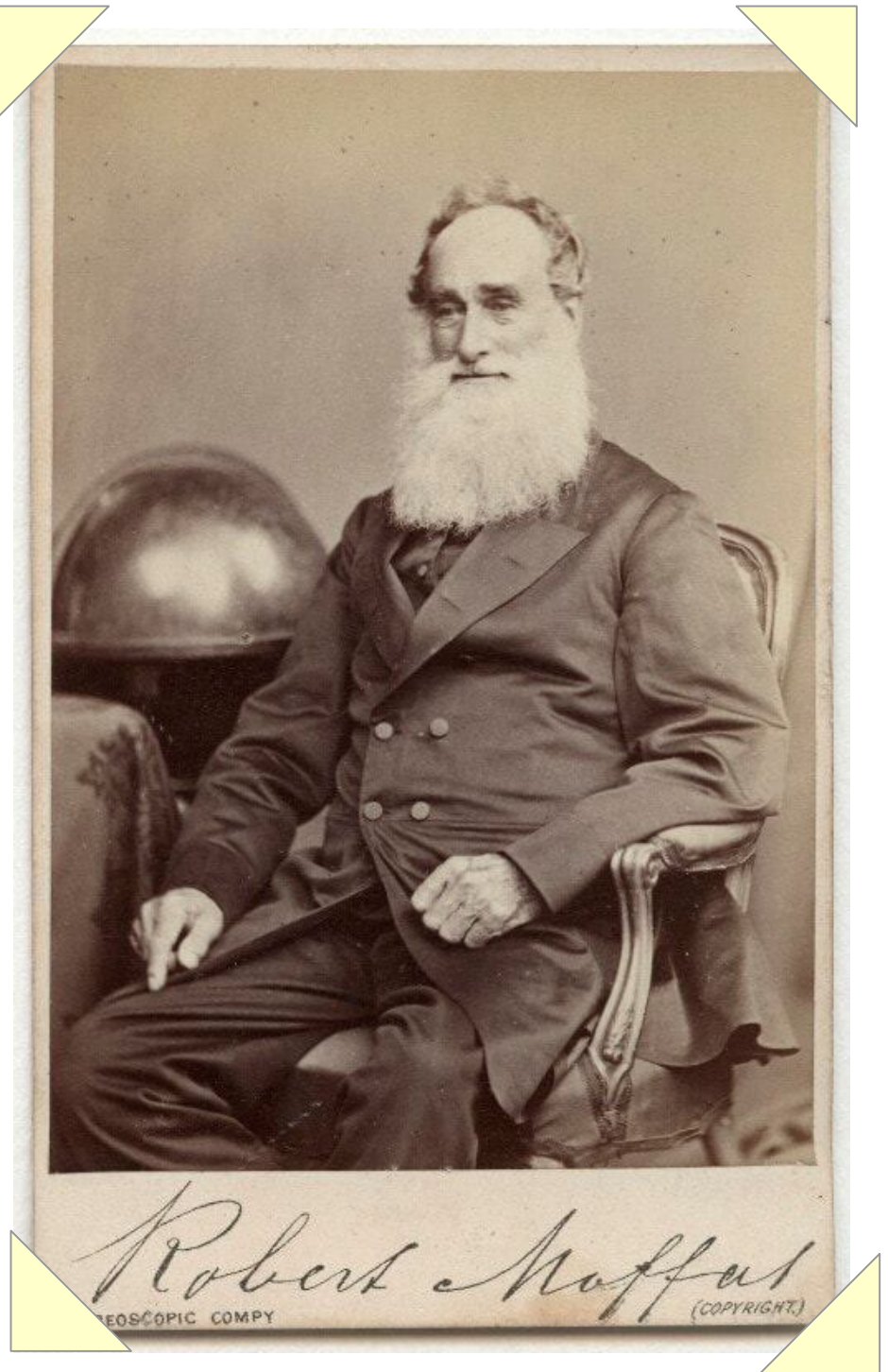
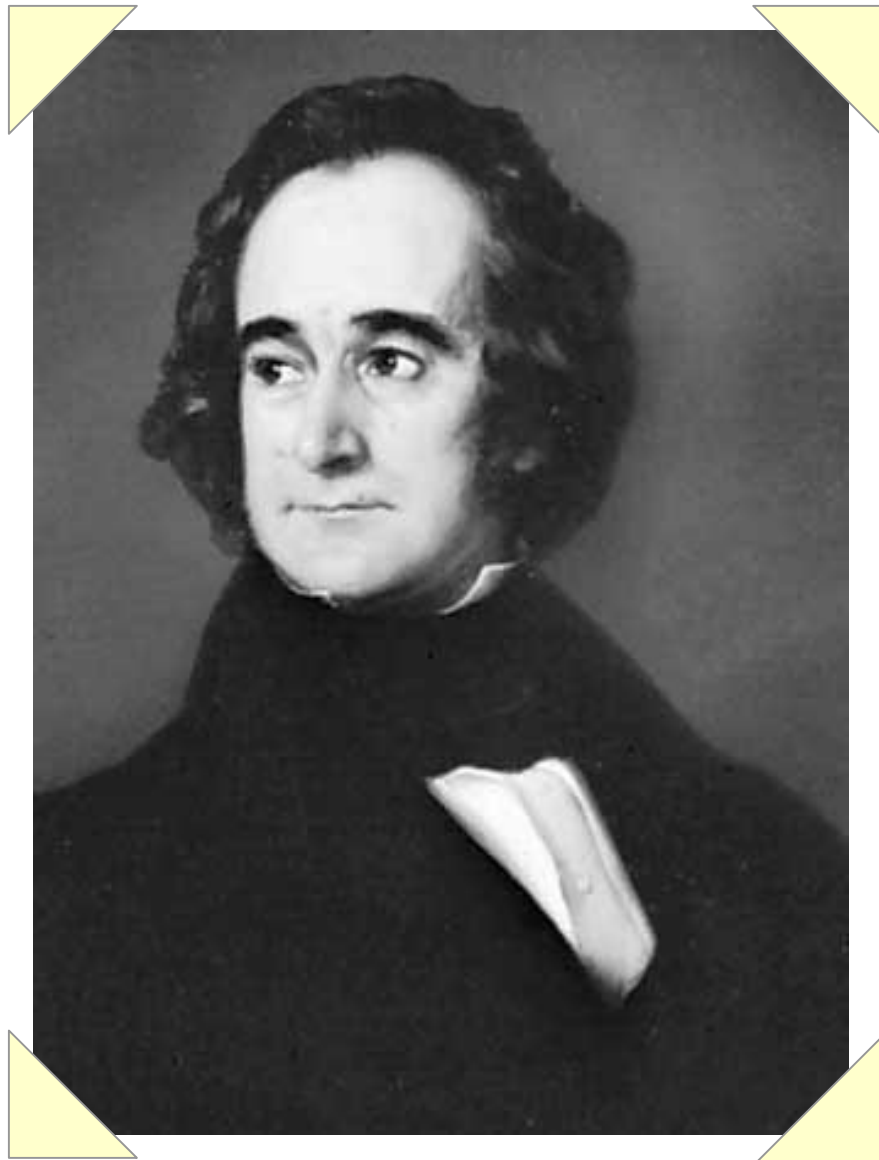
FACES
and
PLACES

from the China Expedition

The background is an antique map with a grid of latitude and longitude lines. A compass rose is visible at the bottom, showing cardinal directions like 'NW' and 'NE'. A red 'X' mark is on the left side, and a circular diagram is at the top. The map is aged and stained.

Robert Moffat

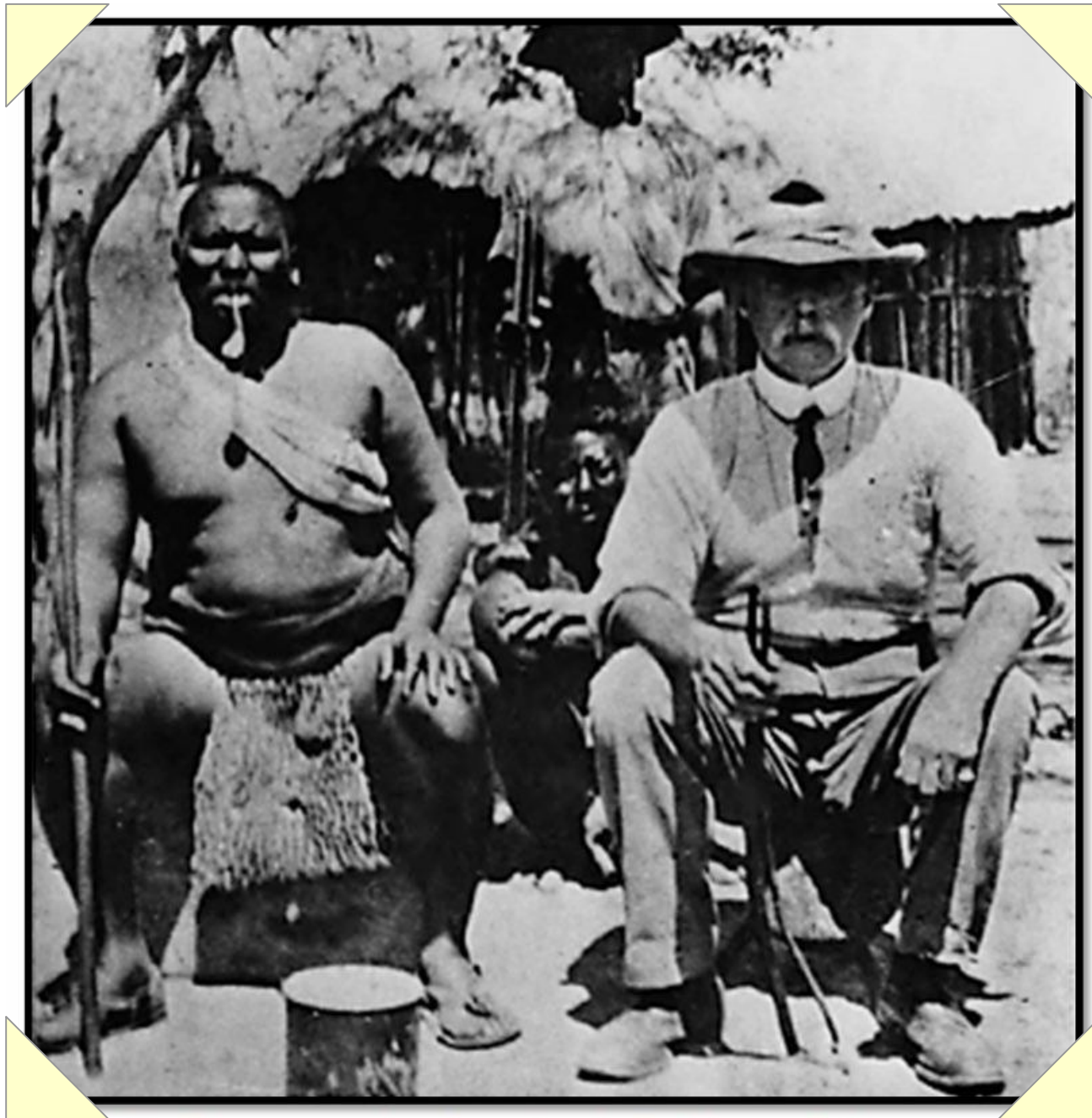
(1795-1883)



Portraits of Robert Moffat



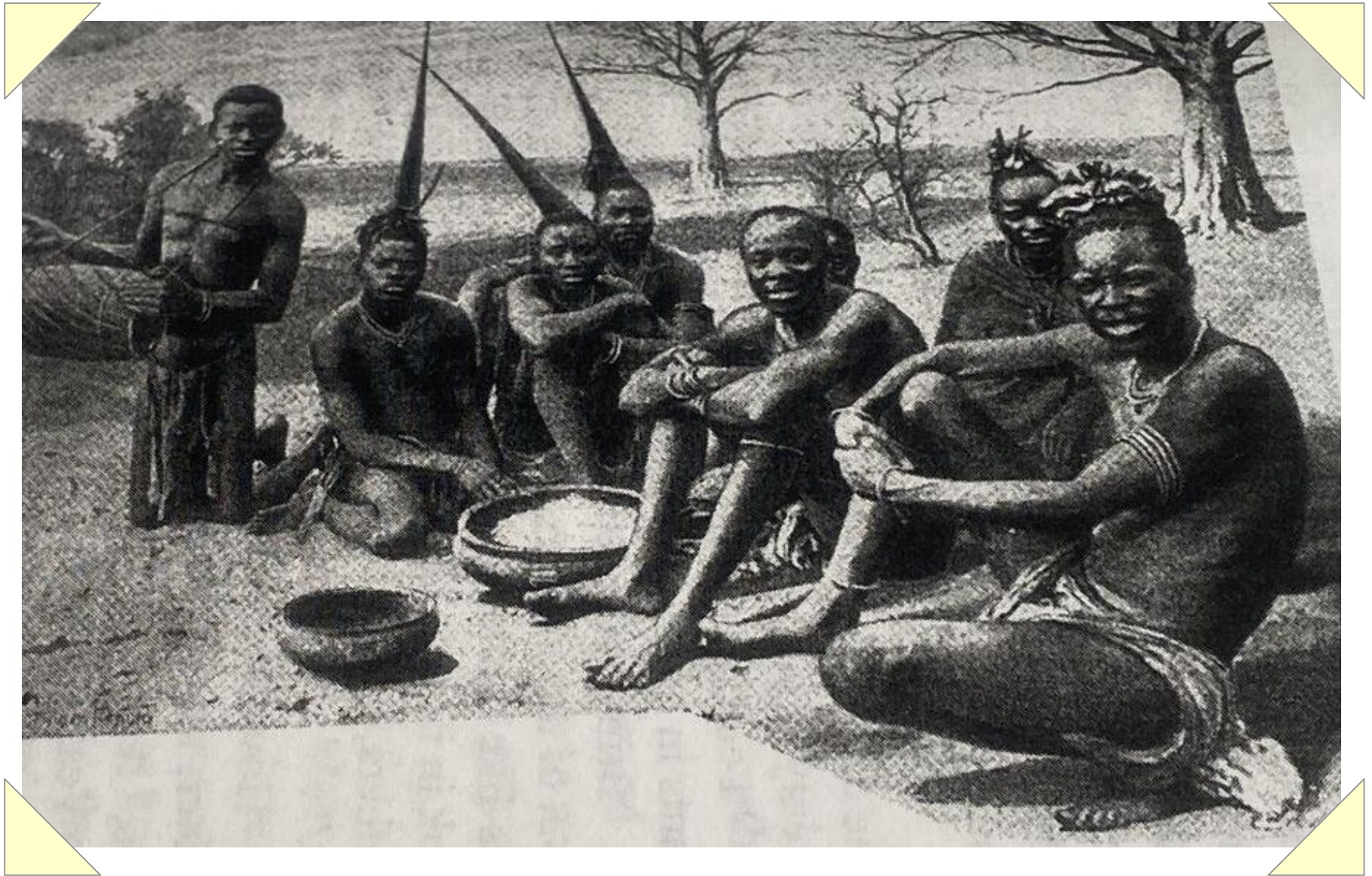
Robert Moffat's Church at Kuruman



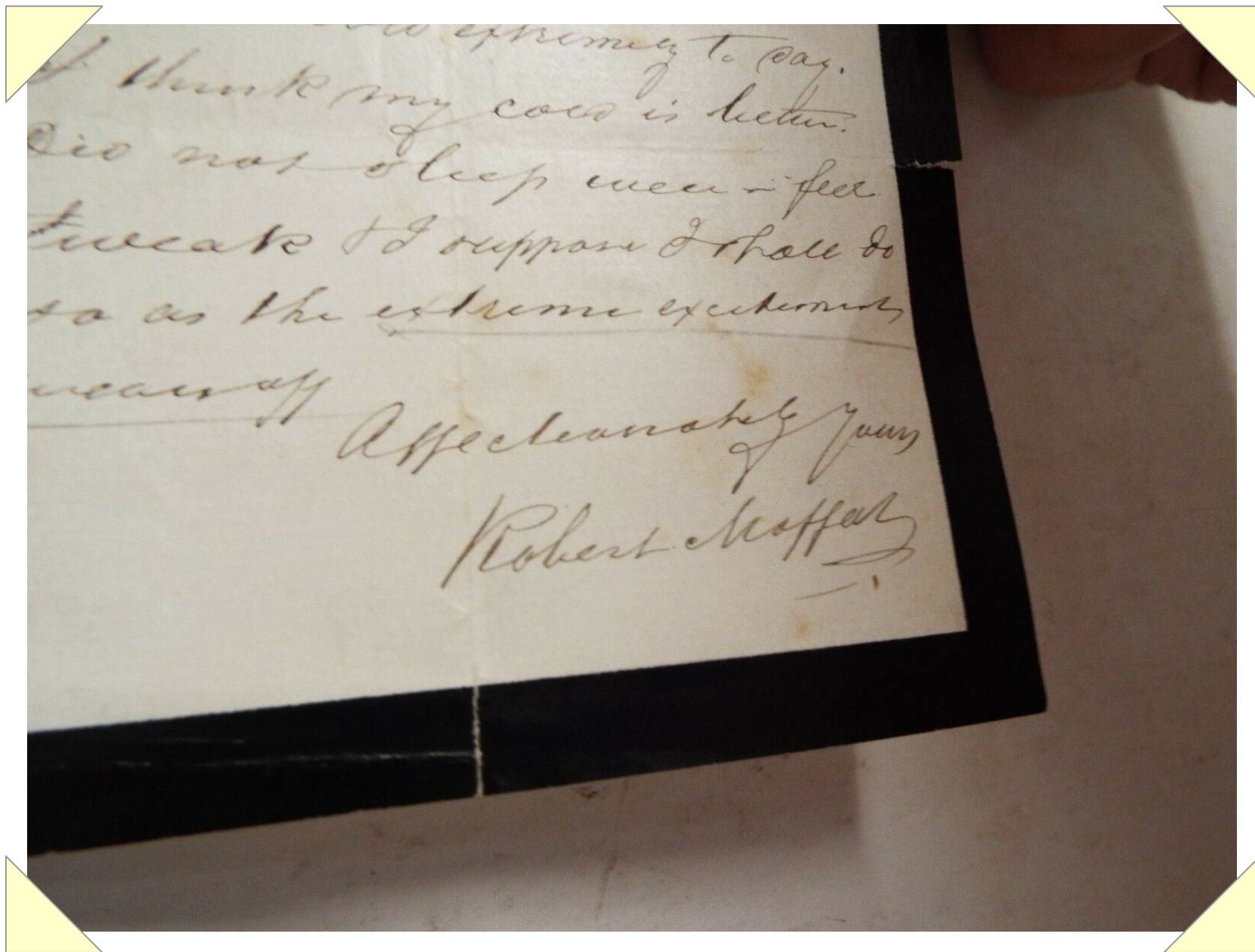
Robert Moffat with King Lobengula



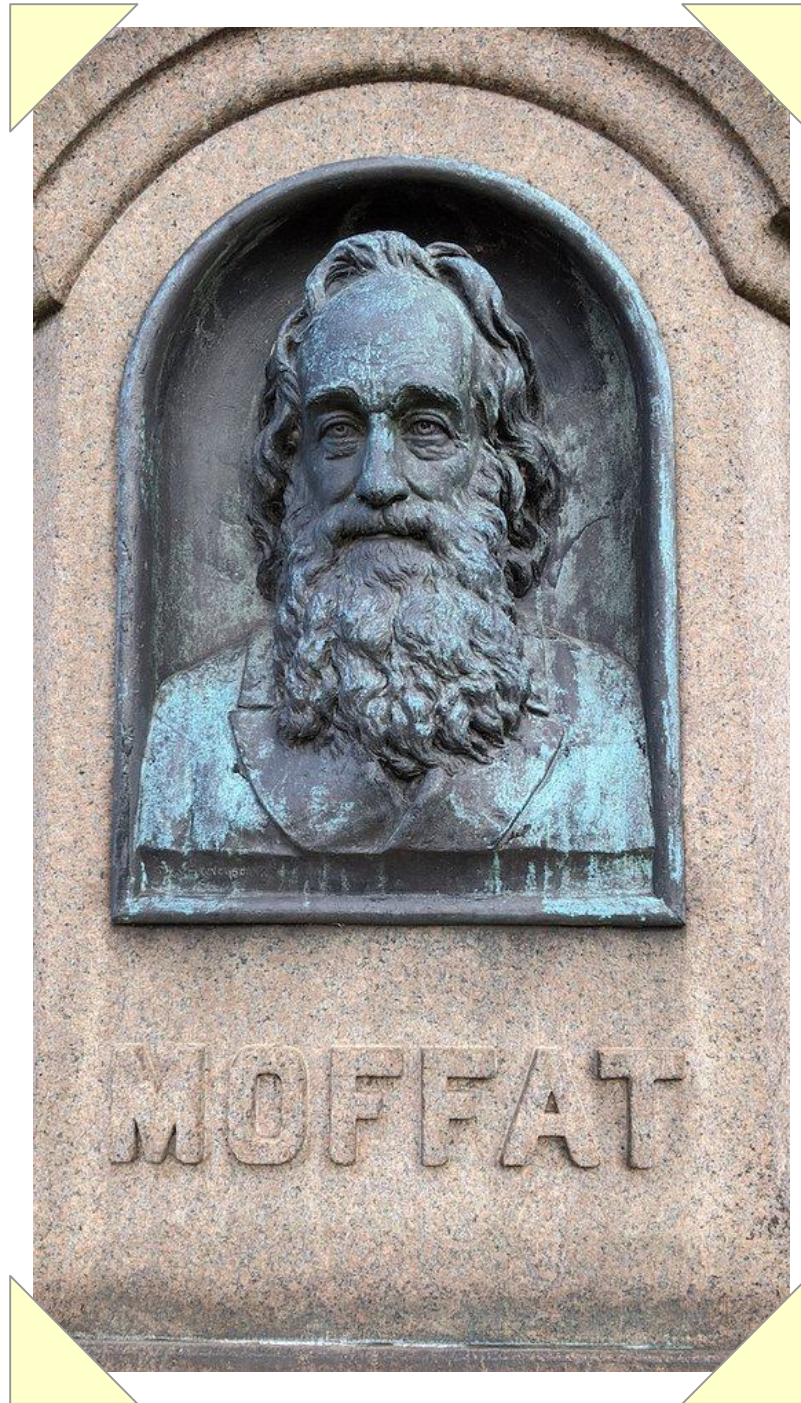
Warrior that David Livingstone and Robert Moffat Encountered



Natives along the upper Zambesi River



Letter Written and Signed by Robert Moffat



Monument for Robert Moffat

